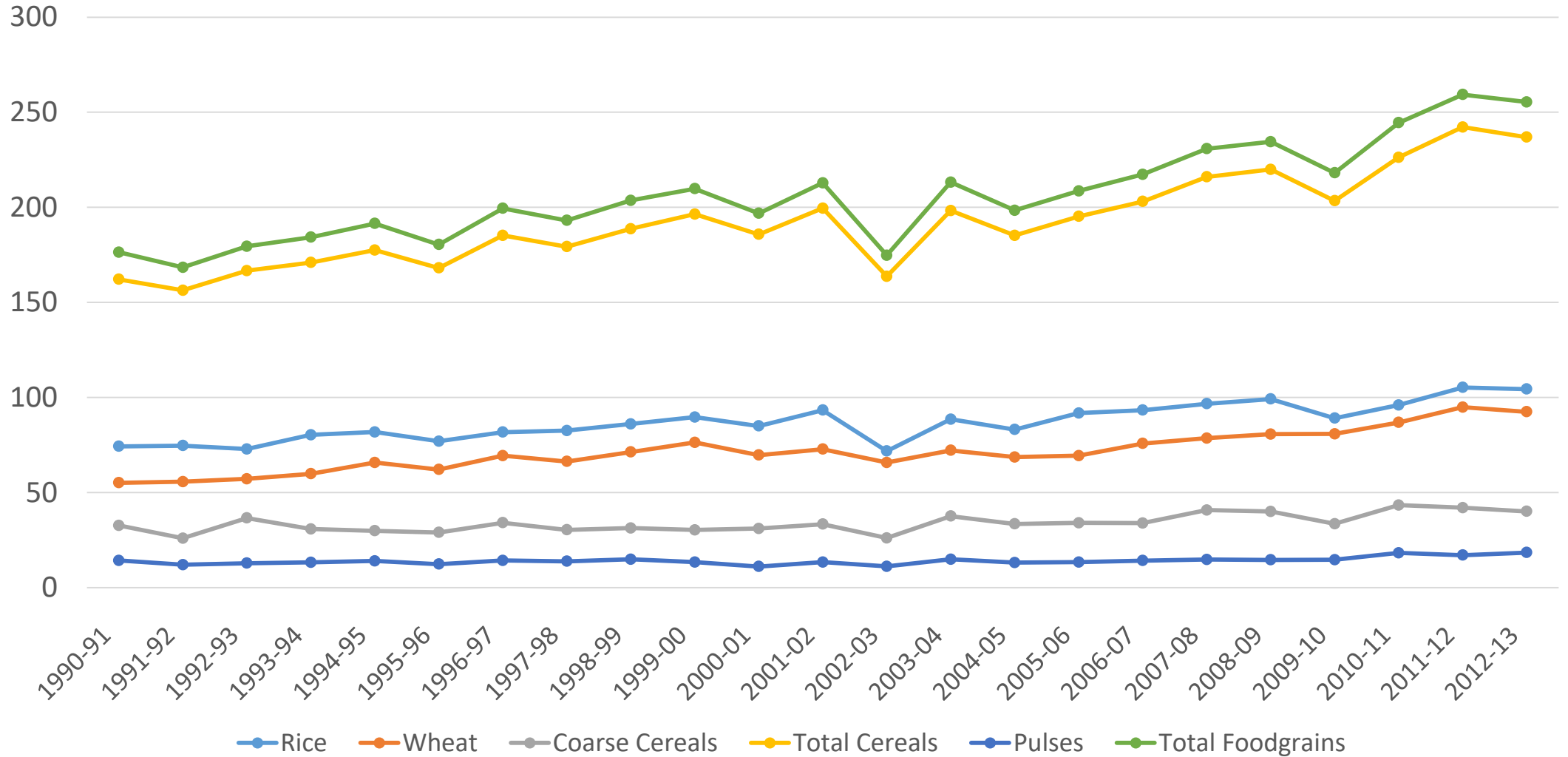


Agriculture in India

MCRHRDI

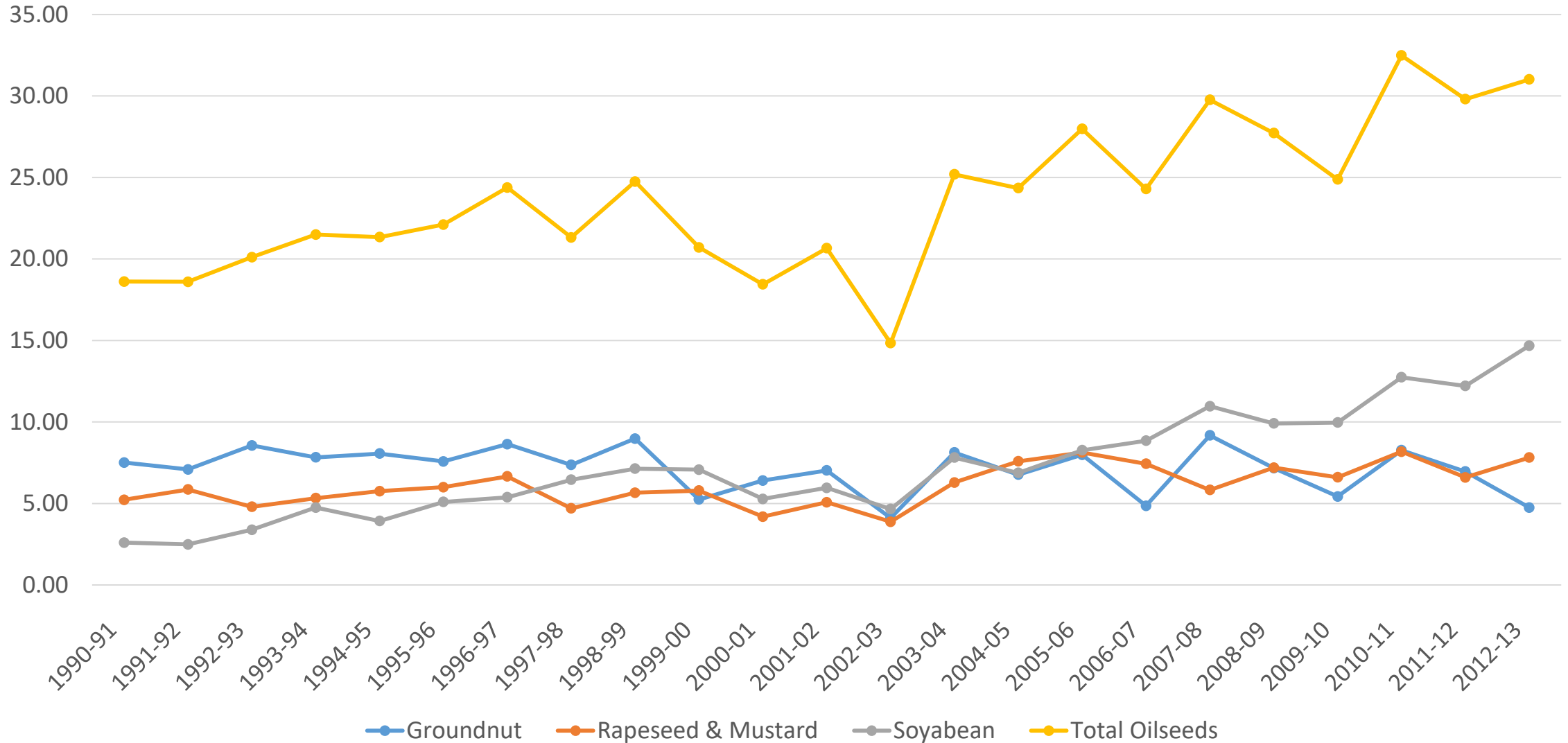
Agriculture production- Fodgrains (Million Tonnes)

Agriculture Production- Foodgrains (Million Tonnes)



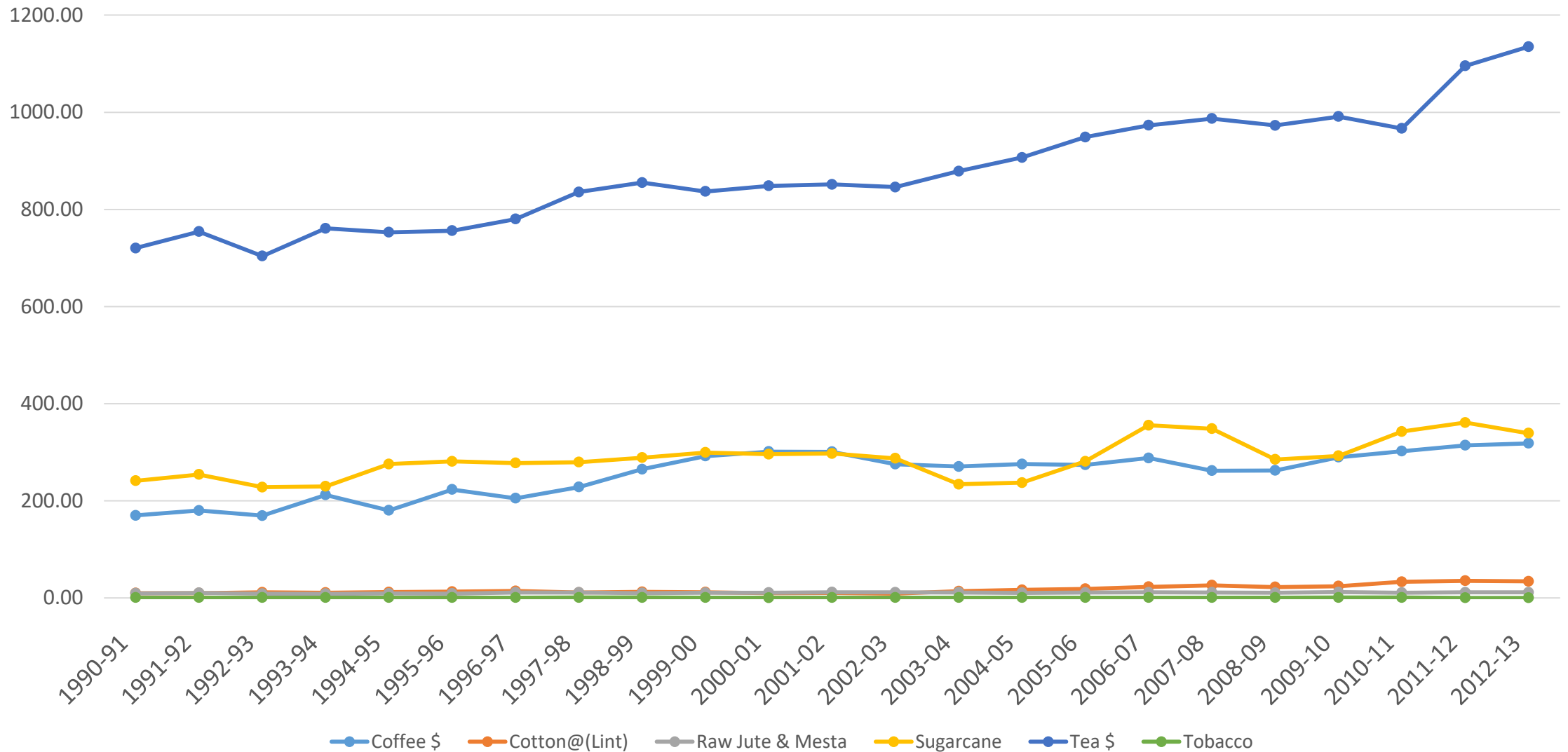
Agriculture Production- Major commercial Crops (Million Tonnes)

Agriculture Production- Major Commercial Crops (Million Tonnes)



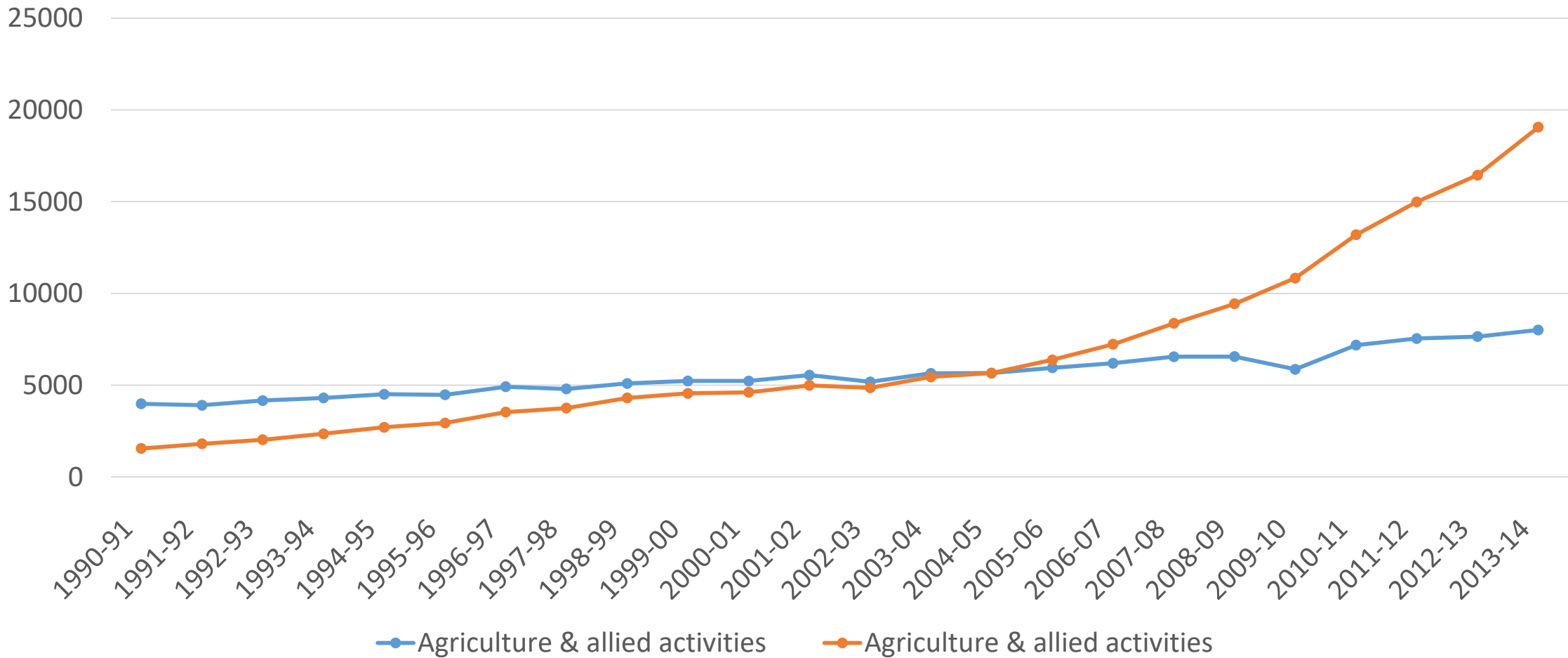
Agriculture Production- Major Commercial Crops (Million Tonnes)

Agriculture Production- Major Commercial Crops(Million Tonnes)



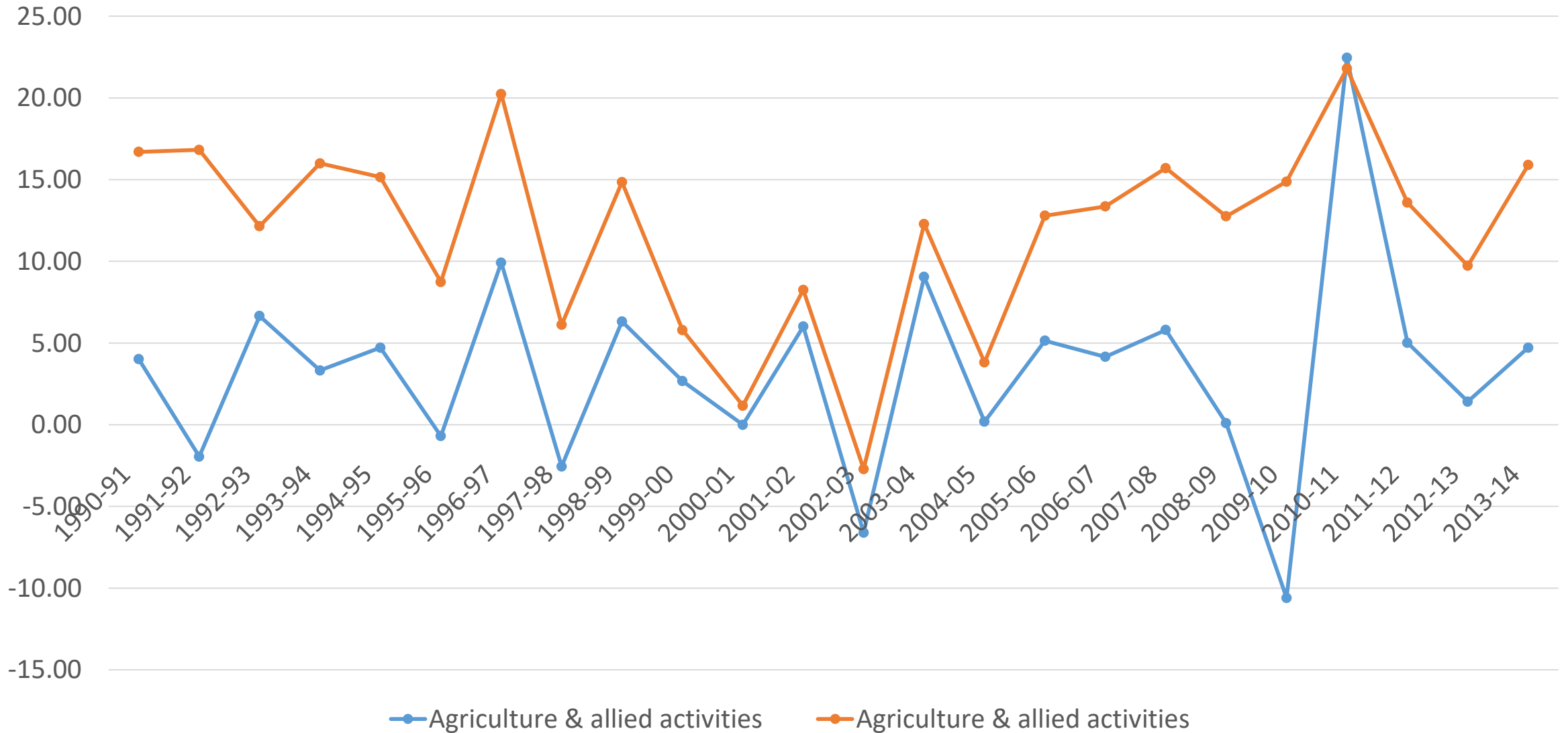
Components Of GDP at Factor Cost- Agriculture & Allied Activities

Components of GDP at factor cost



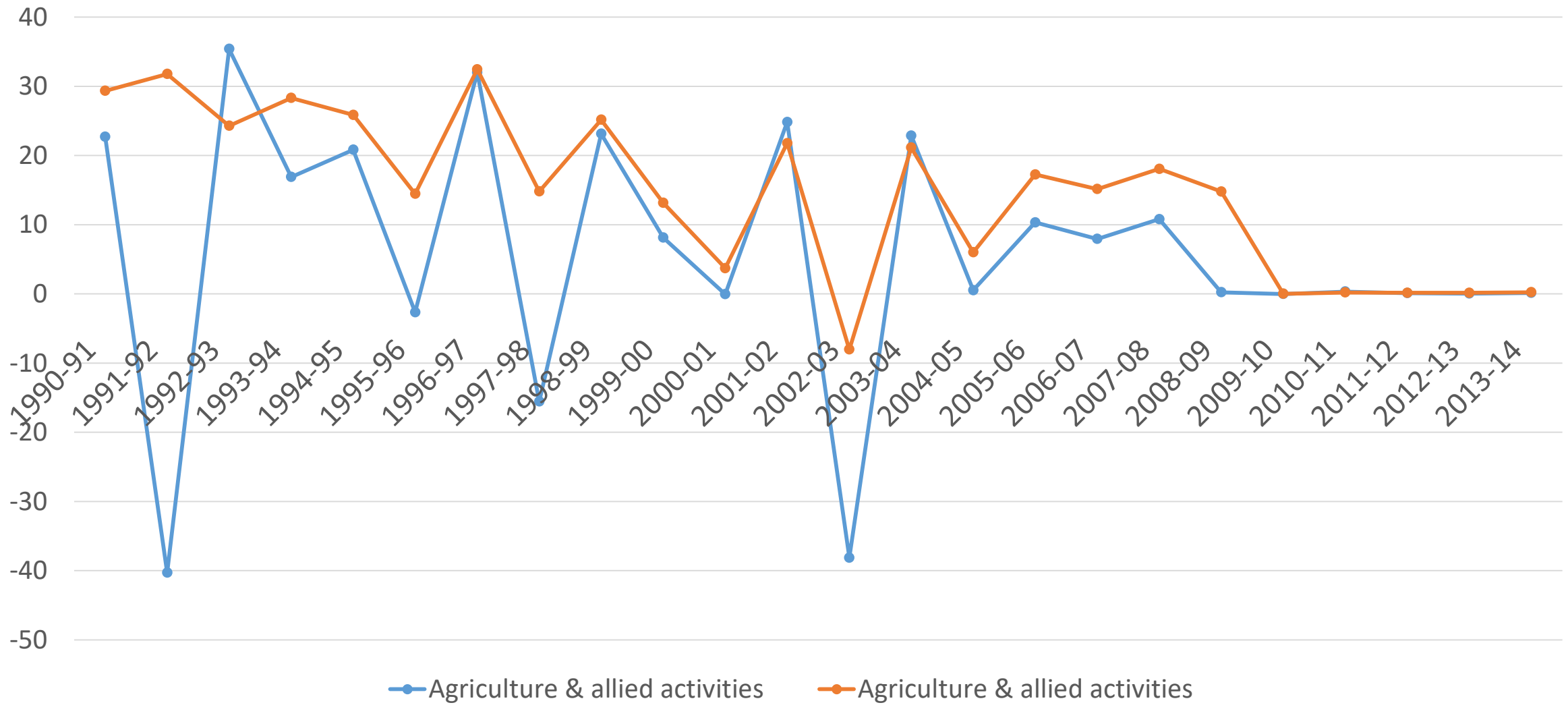
Sectoral Growth Of GDP- Agriculture & Allied Activities

Sectoral Growth Of GDP- Agriculture & Allied Activities



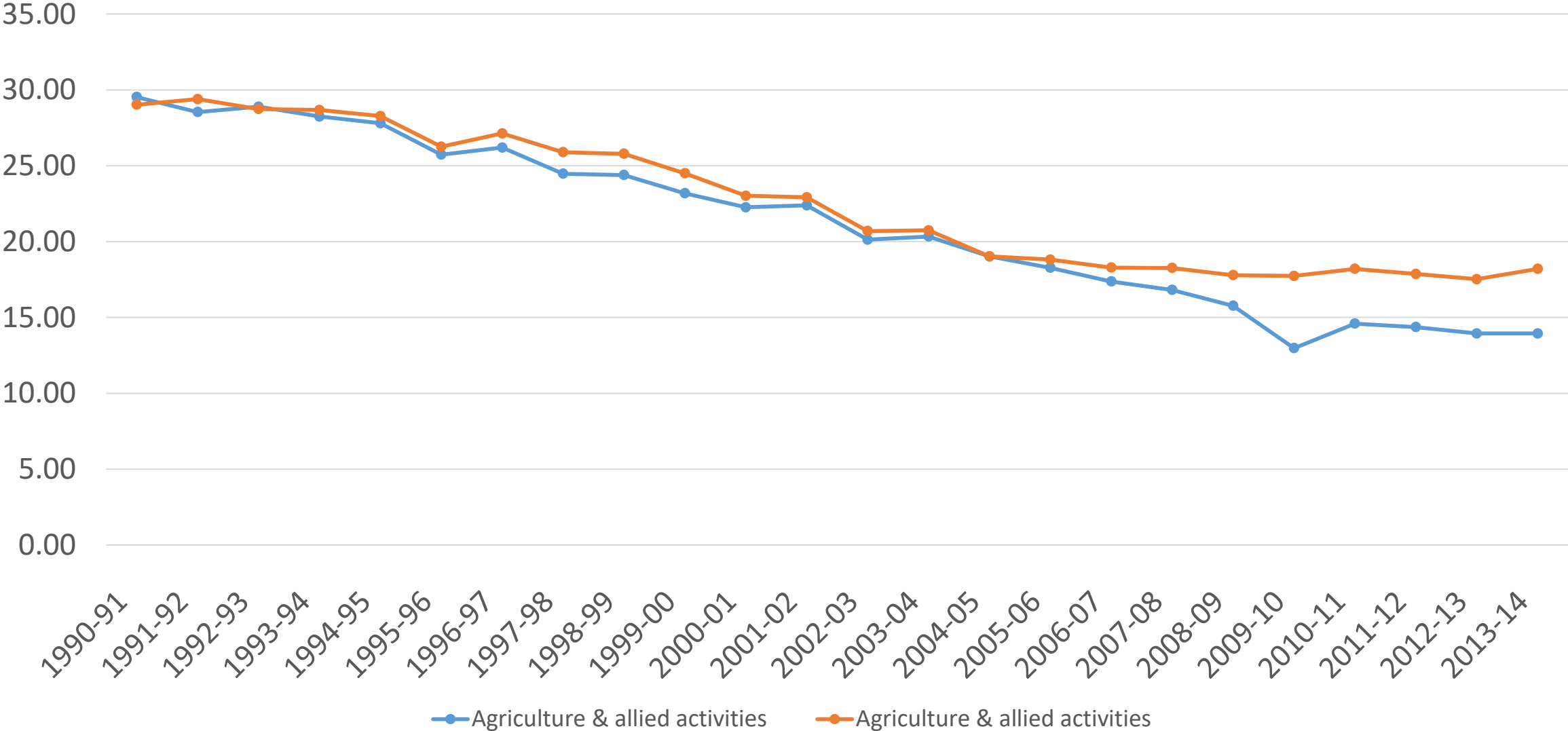
Sectoral Contribution to Growth- Agriculture & Allied Activities

Sectoral Contribution to Growth- Agriculture & Allied Activities



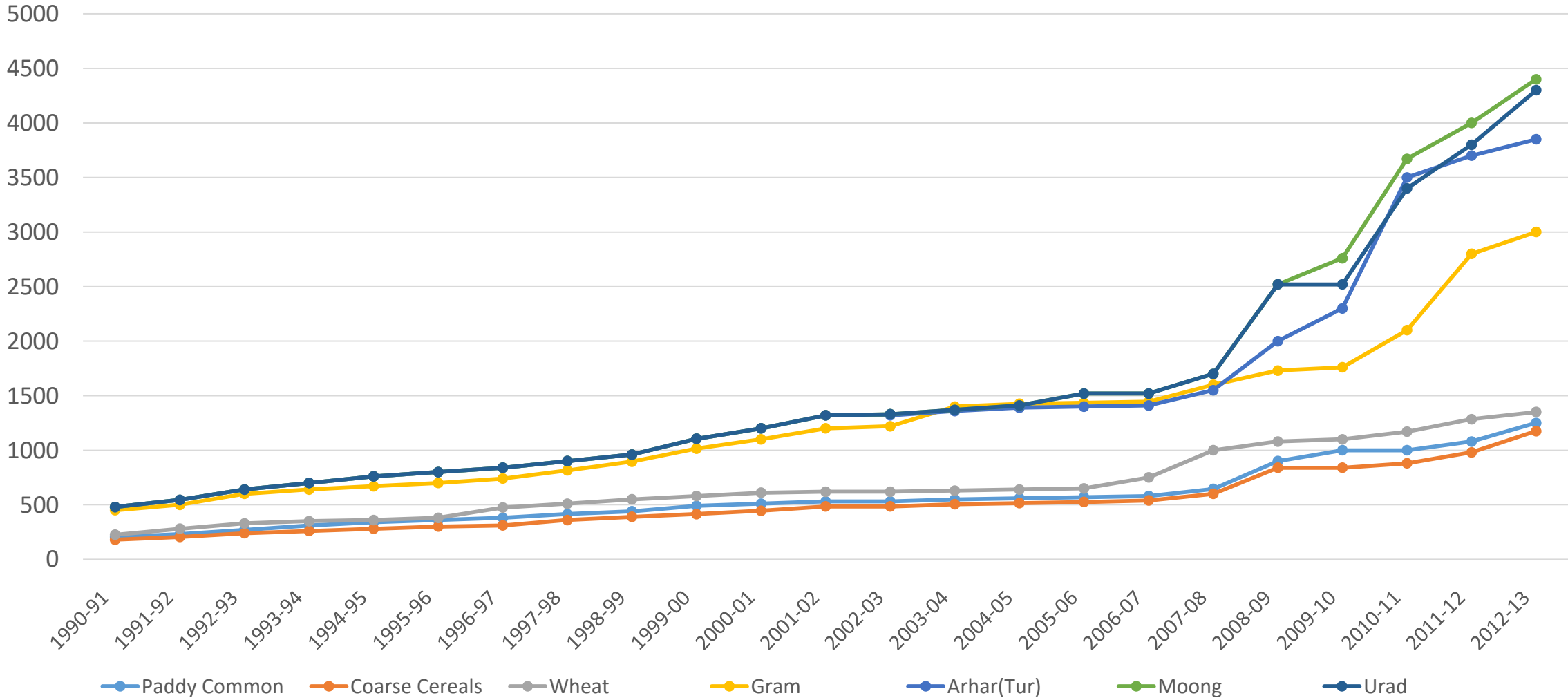
Sectoral Composition Of GDP- Agriculture & Allied Activities

Sectoral Composition of GDP- Agriculture & Allied Activites



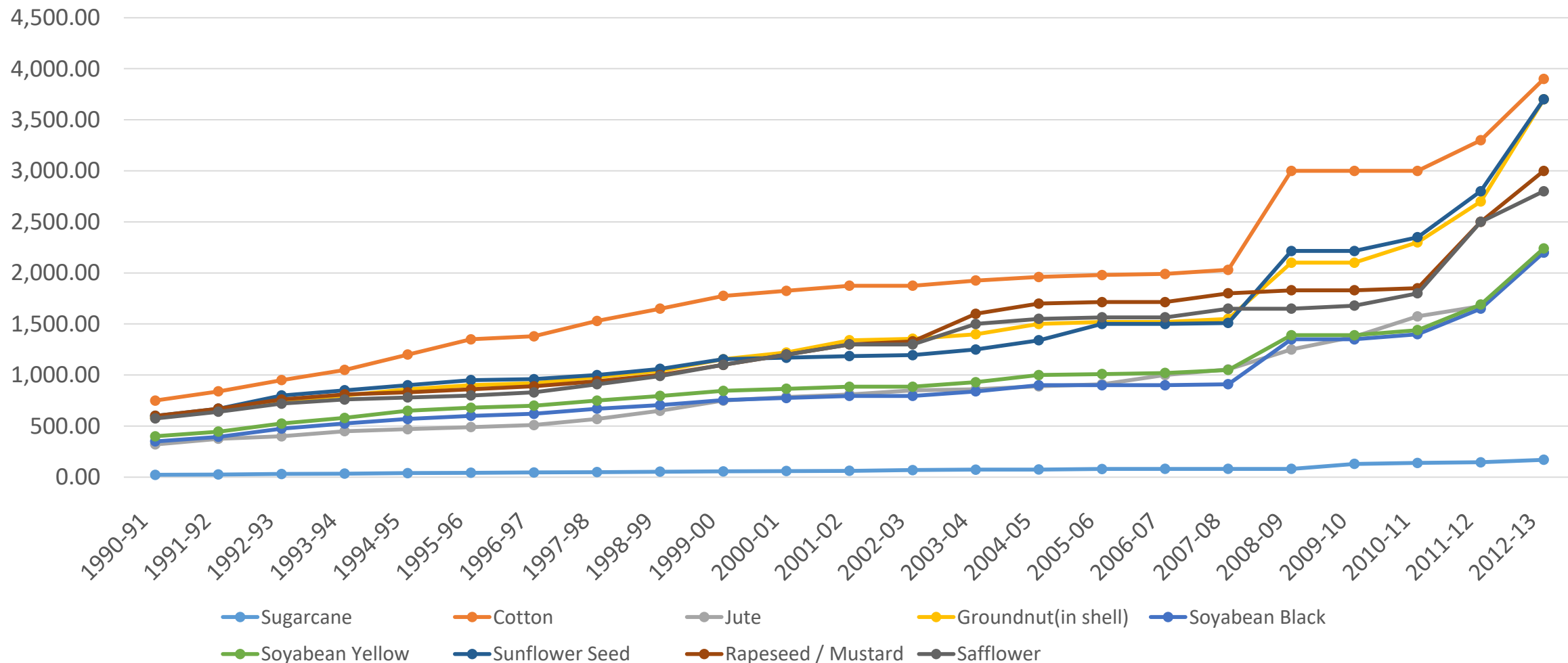
Minimum Support Price for Foodgrain according to Crop Year (Rupees per Quintal)

Minimum Support Price for Foodgrain according to Crop Year (Rupees per Quintal)



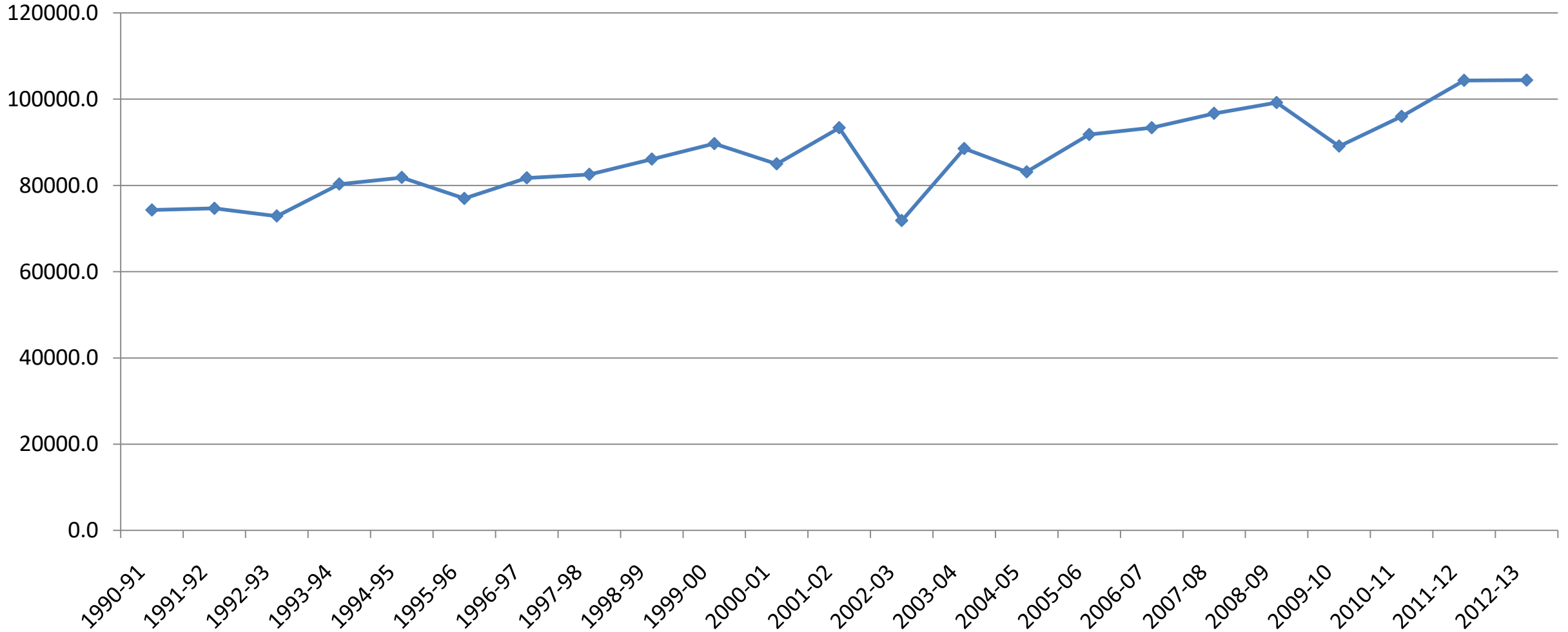
Minimum Support Price for Non- Foodgrains acc.to Crop Year (Rupees per Quintal)

Minimum Support Price for Non- Foodgrains acc.to Crop Year (Rupees per Quintal)



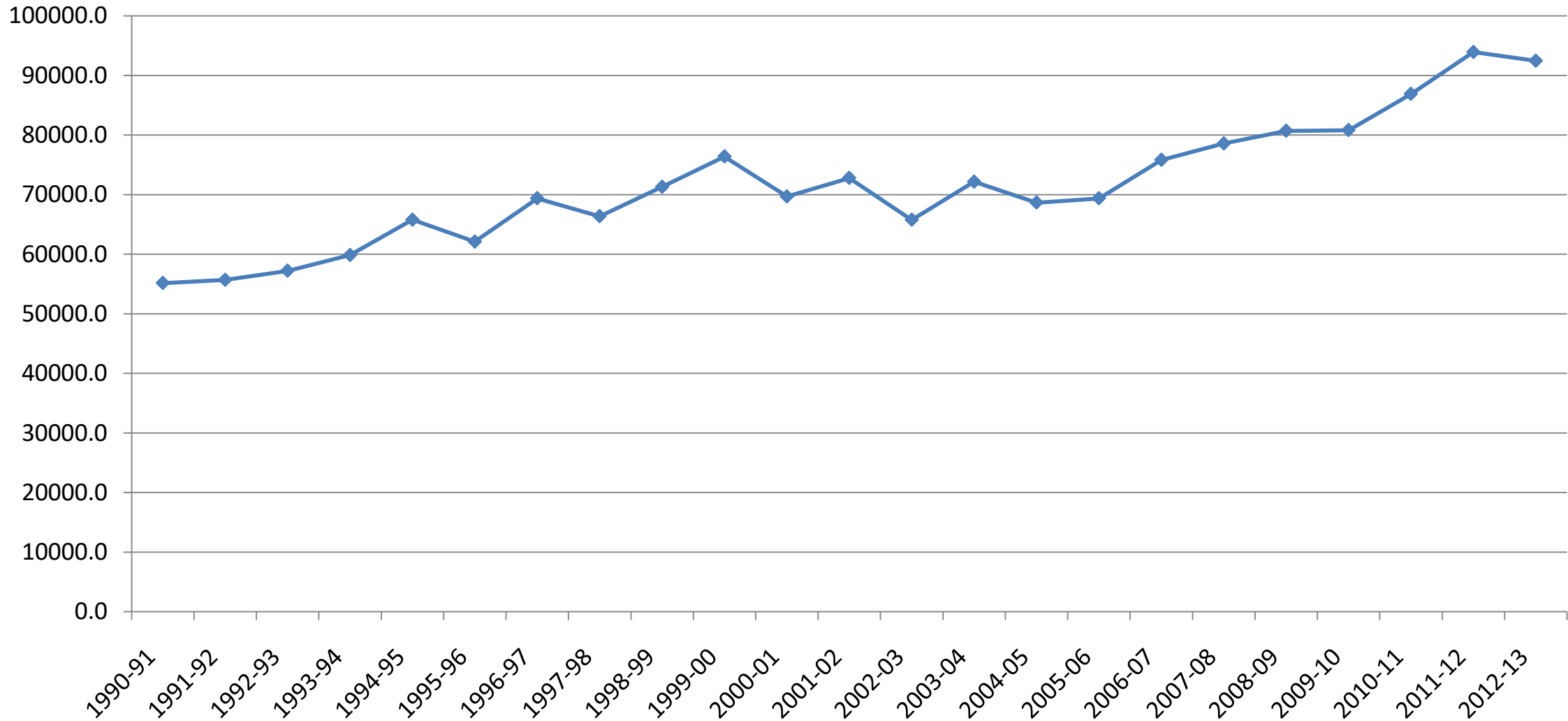
All India Production of Foodgrain and major Non-Foodgrain crops
(in thousand tonnes)

Rice



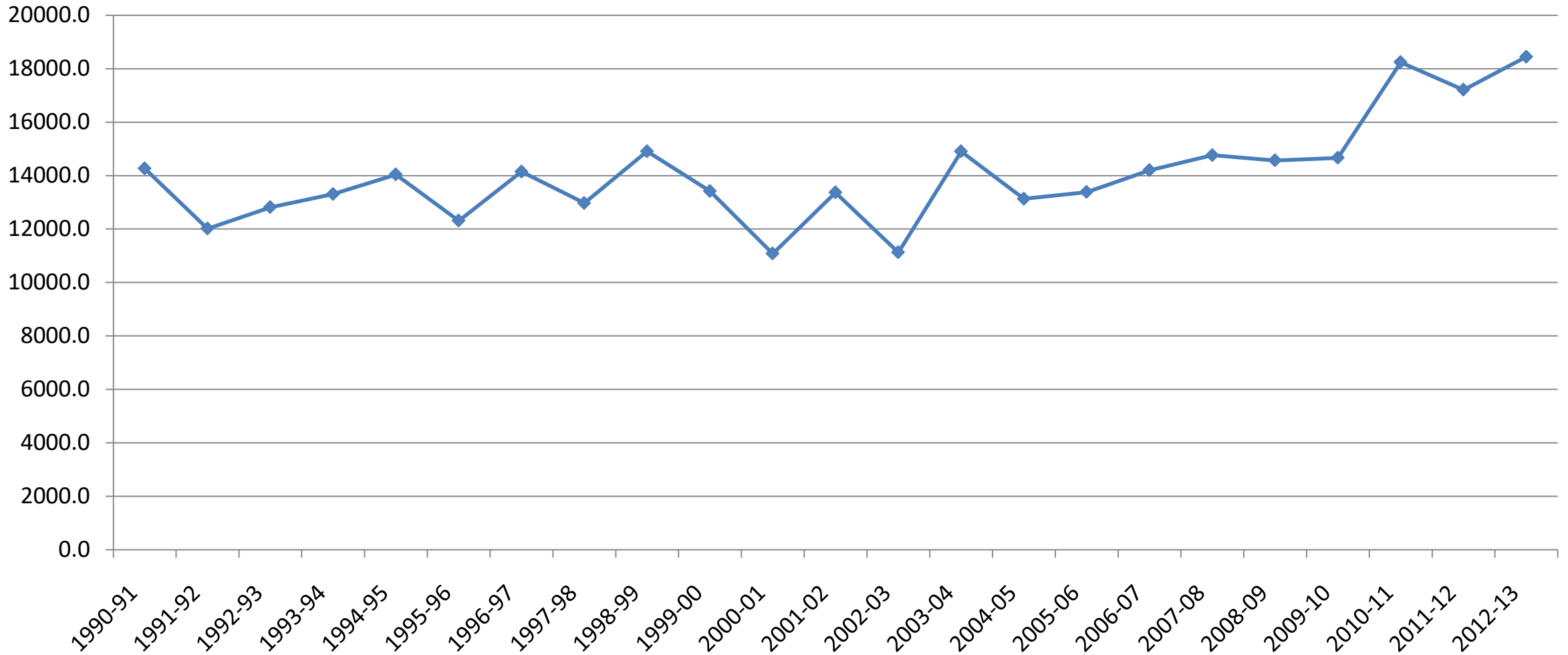
All India Production of Foodgrain and major Non-Foodgrain crops
(in thousand tonnes)

Wheat



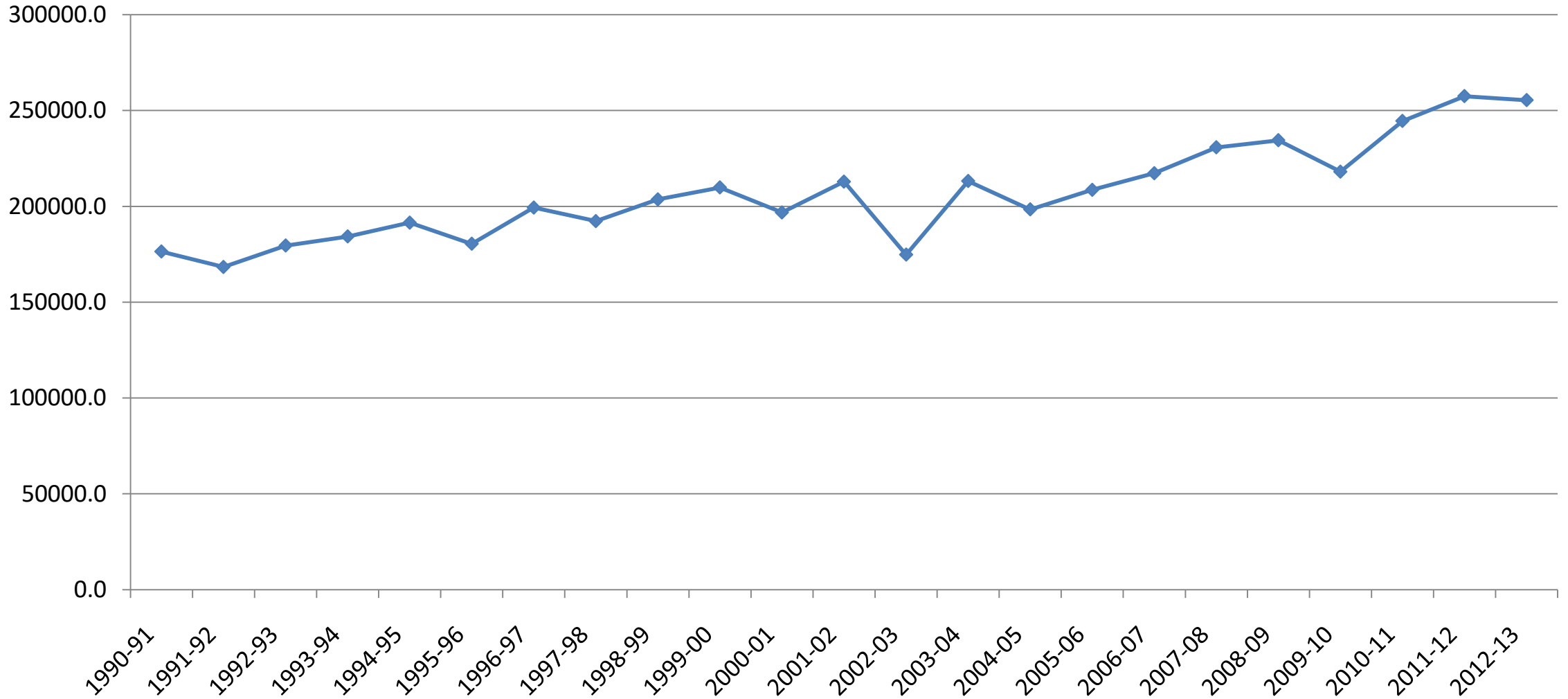
All India Production of Foodgrain and major Non-Foodgrain crops
(in thousand tonnes)

Pulses



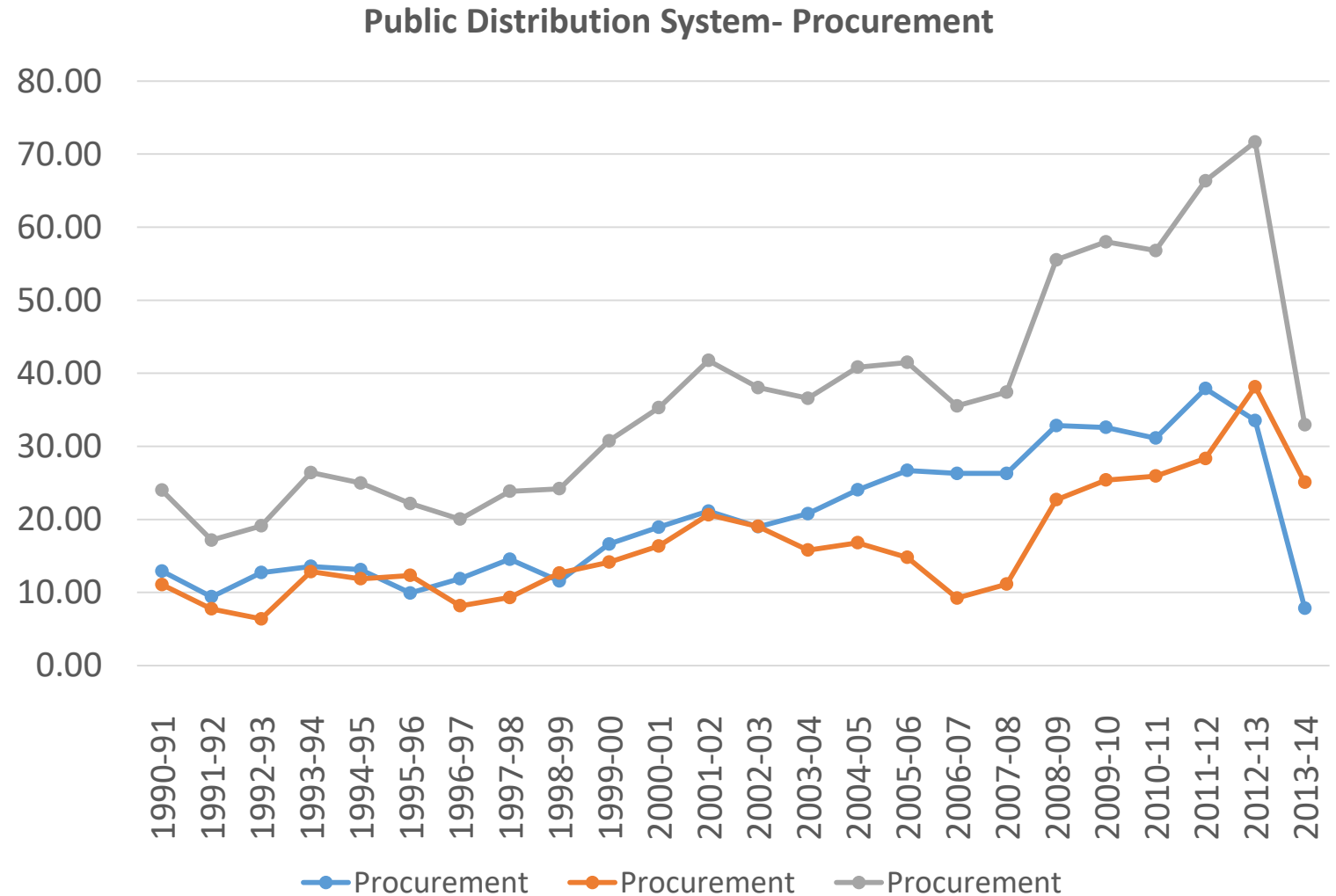
All India Production of Foodgrain and major Non-Foodgrain crops
(in thousand tonnes)

Food Grains



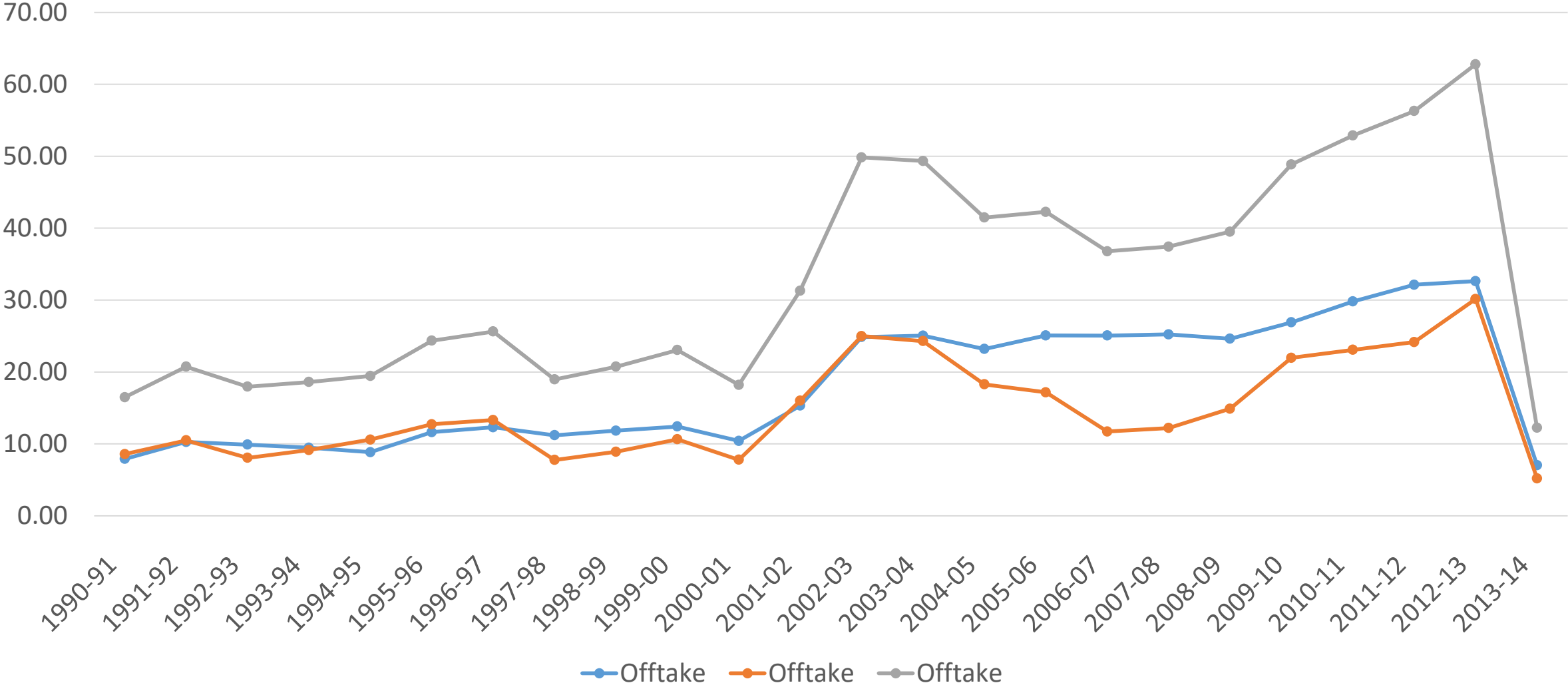
Public Distribution System (Rice & Wheat)- Procurement (Million Tonnes)

Year	Procurement		
	Rice	Wheat	Total
1990-91	12.92	11.07	23.99
1991-92	9.41	7.75	17.16
1992-93	12.72	6.38	19.10
1993-94	13.56	12.84	26.40
1994-95	13.12	11.87	24.99
1995-96	9.93	12.33	22.16
1996-97	11.88	8.16	20.04
1997-98	14.54	9.30	23.84
1998-99	11.55	12.65	24.20
1999-00	16.62	14.14	30.76
2000-01	18.93	16.36	35.29
2001-02	21.12	20.63	41.75
2002-03	19.00	19.03	38.03
2003-04	20.78	15.80	36.58
2004-05	24.04	16.80	40.83
2005-06	26.69	14.79	41.48
2006-07	26.30	9.23	35.53
2007-08	26.29	11.13	37.42
2008-09	32.84	22.69	55.53
2009-10	32.59	25.38	57.98
2010-11	31.13	25.92	56.79
2011-12	37.91	28.33	66.35
2012-13	33.53	38.15	71.67
2013-14	7.85	25.08	32.93



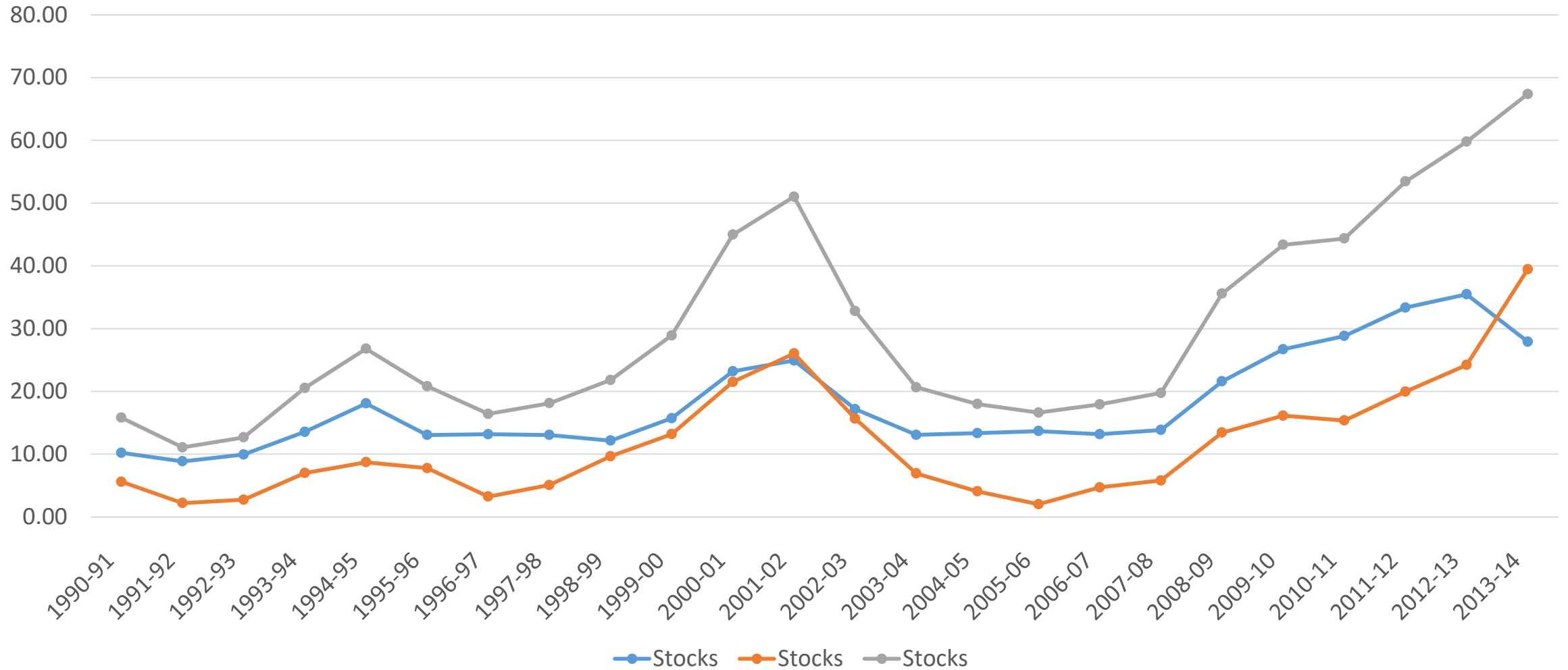
Public Distribution System (Rice & Wheat)- Offtake (Million tonnes)

Public Distribution System- Offtake



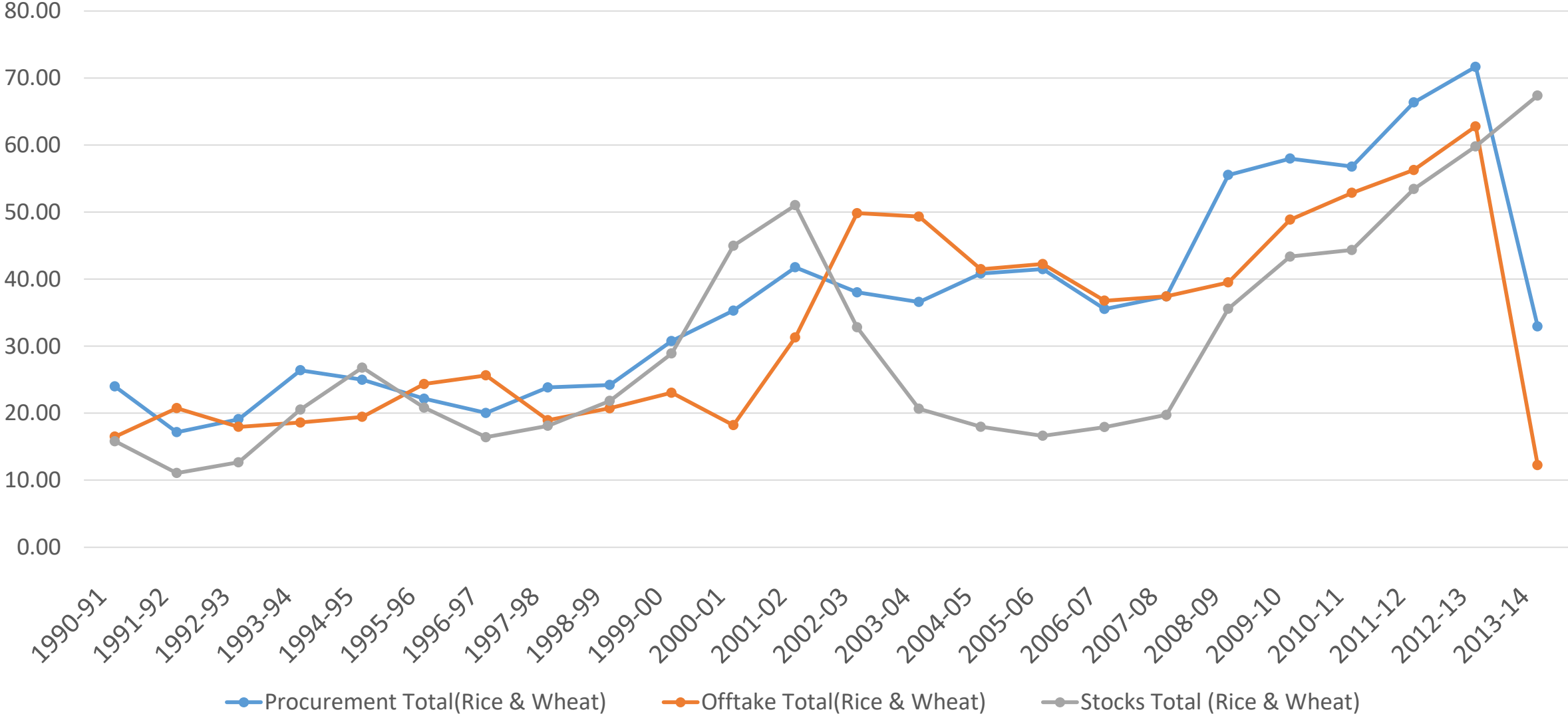
Public Distribution System (Rice & wheat)- Stocks (Million Tonnes)

Public Distribution System (Rice & Wheat) - Stocks (Million Tonnes)



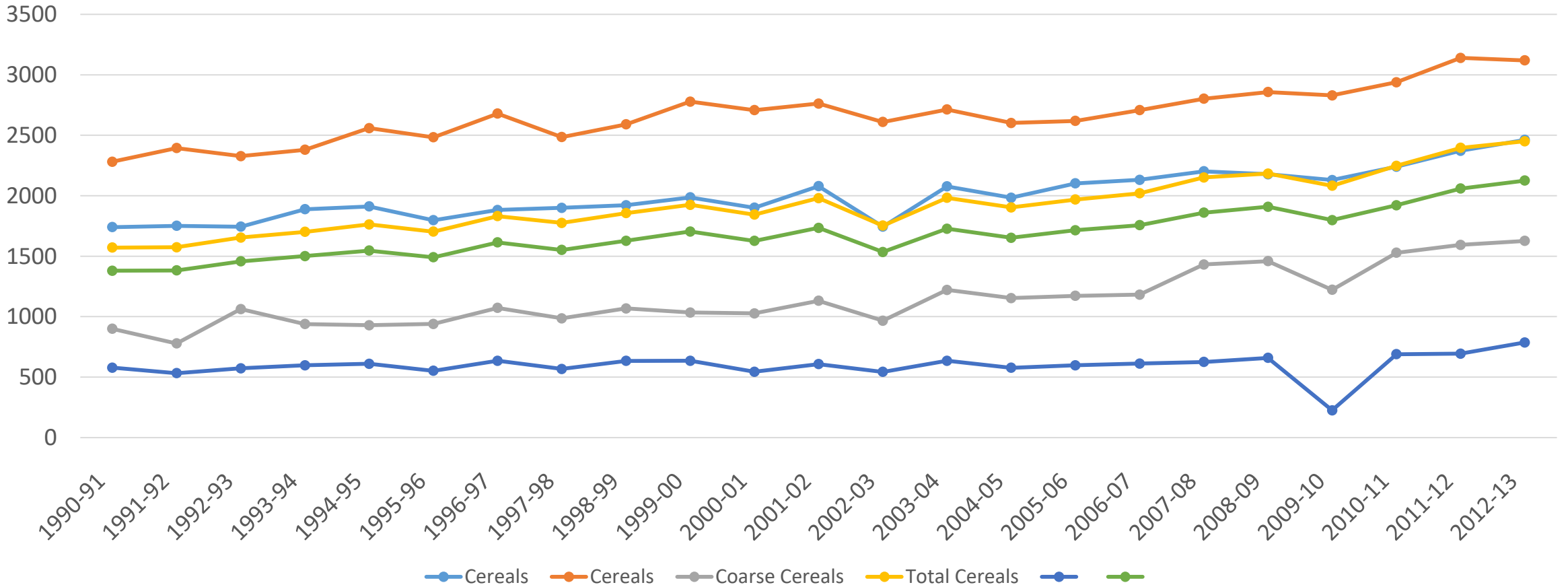
PDS for food grain (Rice & Wheat)- Procurement, Offtake & Stocks (Million Tonnes)

PDS for total of Rice & Wheat- Procurement, Offtake & Stocks (Million Tonnes)



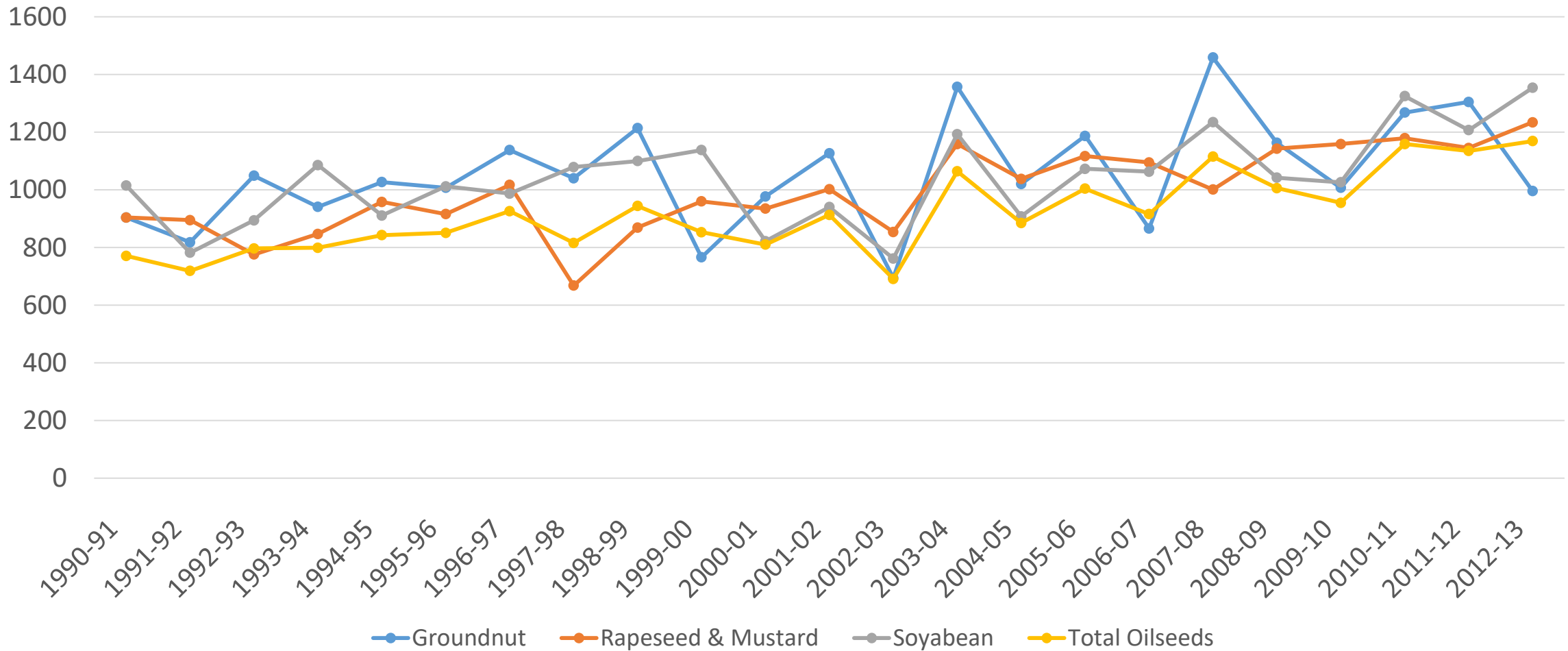
Yield per Hectare- Foodgrains (Kg/ Hectare)

Yield per Hectare-Food grains (Kg/Hectare)



Yield per Hectare- major Commercial Crops- Oilseeds (Kg/Hectare)

Yield per Hectare-Major commercial crops- Oilseeds



Yield per Hectare-Major Commercial Crops (Kg/Hectare)

Yield per Hectare- Major Commercial Crops (Kg/ Hectare)

